

Murray Bridge High School

BYOD Printing from macOS Devices using Mobility Print

Version 1 – 13 August 2018

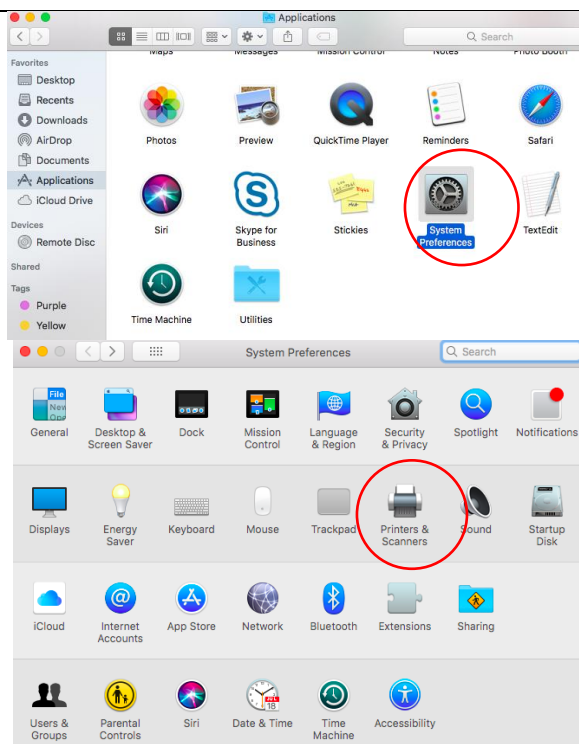


All printing at Murray Bridge High School is monitored and subject to the ICT acceptable use policy.

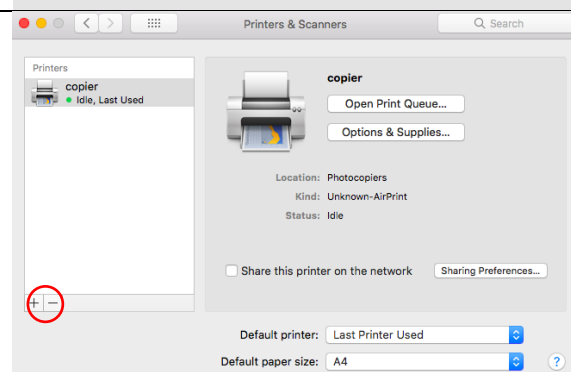
This guide covers the steps for setting up printing using macOS devices that are connected to the Murray Bridge High School BYOD network.

These steps need to be repeated for each printer that you want to use.

1. Navigate to **System Preferences > Printers and Scanners.**



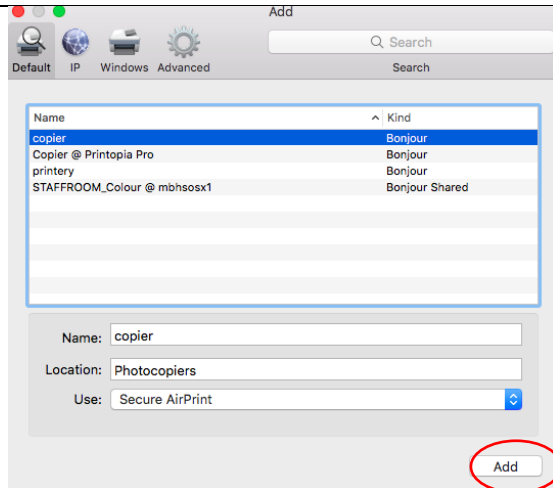
2. Click the **+** icon under the Printers List.



3. The Add dialog is displayed.

This dialog displays a list of all of the discovered printers on the network.

Select the printer that you would like to use and click **Add**.



4. You can now use the printer when printing documents from your macOS device.

If prompted when printing, enter your **MBHS network username and password**.

